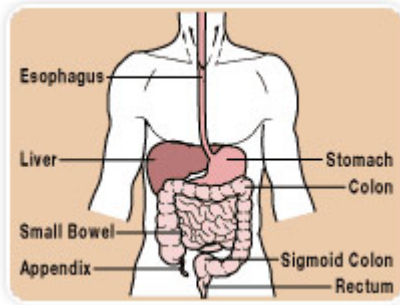


## ERCP



ERCP stands for endoscopic retrograde cholangiopancreatography. As hard as this is to say, the actual exam is fairly simple. A dye is injected into the bile and pancreatic ducts using a flexible, video endoscope. Then x-rays are taken to outline the bile ducts and pancreas.

The liver produces bile, which flows through the ducts, passes or fills the gallbladder and then enters the intestine (duodenum) just beyond the stomach. The pancreas, which is six to eight inches long, sits behind the stomach. This organ secretes

digestive enzymes that flow into the intestine through the same opening as the bile. Both bile and enzymes are needed to digest food.

## Equipment

The flexible endoscope is a remarkable piece of equipment that can be directed and moved around the many bends in the upper gastrointestinal tract. The newer video endoscopes have a tiny, optically sensitive computer chip at the end. Electronic signals are then transmitted up the scope to the computer which then displays the image on a large video screen. An open channel in the scope allows other instruments to be passed through it to perform biopsies, inject solutions, or place stents.

## Reasons for the Exam

Due to factors related to diet, environment and heredity, the bile ducts, gallbladder and pancreas are the seat of numerous disorders. These can develop into a variety of diseases and/or symptoms. ERCP helps in diagnosing and often in treating the condition.

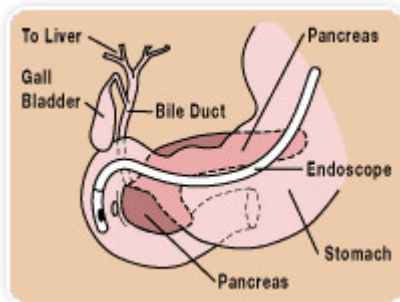
ERCP is used for:

- Gallstones, which are trapped in the main bile duct
- lockage of the bile duct
- Yellow jaundice, which turns the skin yellow and the urine dark
- Undiagnosed upper-abdominal pain
- Cancer of the bile ducts or pancreas
- Pancreatitis (inflammation of the pancreas)

## Preparation

The only preparation needed before an ERCP is to not eat or drink for eight hours prior to the procedure. You may be asked to stop certain medications such as aspirin before the procedure. Check with the physician.

## The Procedure



An ERCP uses x-ray films and is performed in an x-ray room. The throat is anesthetized with a spray or solution, and the patient is usually mildly sedated. The endoscope is then gently inserted into the upper esophagus. The patient breathes easily throughout the exam, with gagging rarely occurring. A thin tube is inserted through the endoscope to the main bile duct entering the duodenum. Dye is then injected into this bile duct and/or the pancreatic duct and x-ray films are taken. The patient lies on his or her left side and then turns onto the stomach to allow complete

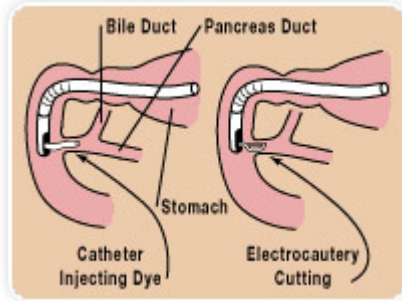
visualization of the ducts. If a gallstone is found, steps may be taken to remove it. If the duct has become narrowed, an incision can be made using electrocautery (electrical heat)

to relieve the blockage. Additionally, it is possible to widen narrowed ducts and to place small tubing, called stents, in these areas to keep them open. The exam takes from 20 to 40 minutes, after which the patient is taken to the recovery area.

### Results

After the exam, the physician explains the results. If the effects of the sedatives are prolonged, the physician may suggest an appointment for a later date when the patient can fully understand the results.

### Benefits



An ERCP is performed primarily to identify and/or correct a problem in the bile ducts or pancreas. This means the test enables a diagnosis to be made upon which specific treatment can be given. If a gallstone is found during the exam, it can often be removed, eliminating the need for major surgery. If a blockage in the bile duct causes yellow jaundice or pain, it can be relieved.